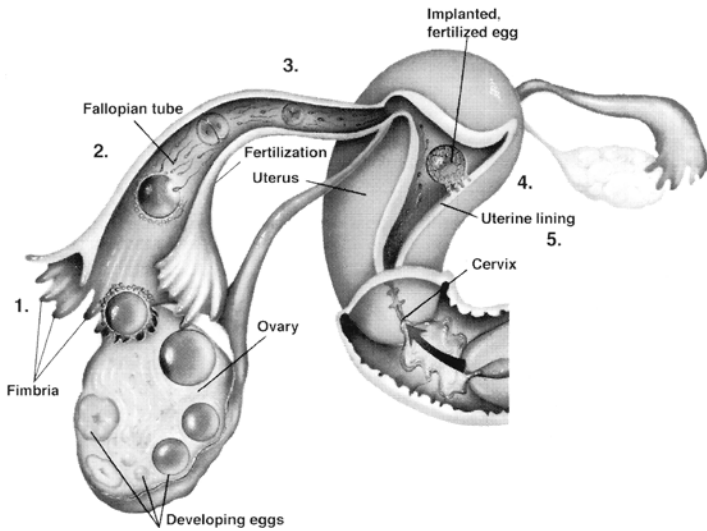


SPONTANEOUS CONCEPTION

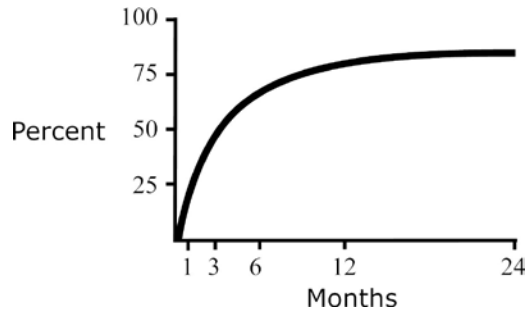


1. Fourteen days prior to the beginning of a new cycle, an ovarian follicle releases a microscopic egg.
2. Sperm, which can wait in the Fallopian tubes for several days, must fertilize the egg within 12 to 16 hours of ovulation.
3. The fertilized egg (embryo) moves through the Fallopian tube and starts to divide the day after fertilization. In two days, it has 4 cells, in three days, 8 cells and in six days it has over 100 cells.
4. Female hormones estrogen and progesterone, produced by the ovulating follicle, prepare the lining of the uterus for implantation.
5. Six to eight days after fertilization, the embryo hatches out and implants into the lining of the uterus and starts to produce the pregnancy hormone (hCG).

INFERTILITY

Infertility is defined as no ongoing pregnancy after 6-12 months of sexual activity without contraception.

A. Speed of conception in the general population:



Monthly pregnancy probability:

1st month: 20-25%

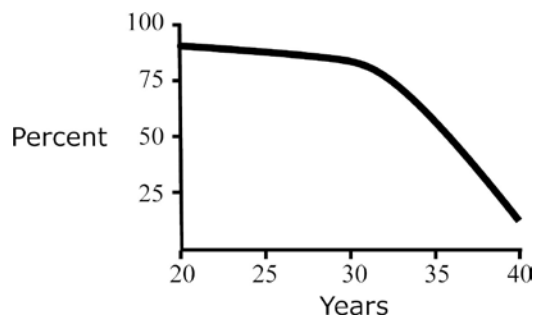
13th month: 1.5%

25th month: 0.1%

B. There are three groups of causes of infertility:

1. Male Factor: Sperm production and sperm fertilizing capacity
2. Ovulation: Egg production, egg quality and preparation of uterine lining for implantation
3. Passage: The joining of sperm and egg in the Fallopian tubes and transport of the fertilized egg

C. Female age and fertility:



Loss of female fertility:

The decrease in female fertility potential is due to the loss of high quality eggs. The receptivity of the uterus is not decreased. This age-related loss of fertility magnifies the impact of any other infertility factor(s) present.